



## *The Reflector – January 2012*

### Join Us For Worship

**Sunday School 9:00 am**  
*For All ages*

**Blended Worship Service**  
**10:30 am**  
w/ Childcare ages Infant  
through 1<sup>st</sup> Grade

**Pastor:**

**Rev. Kimberly Secrist Ashby**  
P.O. Box 54  
600 Fallston Road  
Fallston, MD 21047  
Ph.: 410-879-PRAY (7729)  
Email: [fallstonpc@gmail.com](mailto:fallstonpc@gmail.com)  
Website: [www.fallstonpc.org](http://www.fallstonpc.org)

A HAPPY  
NEW YEAR  
TO ALL



### **A Message from the Pastor**

Dear Members and Friends,

It is a new year, full of possibilities! So many times we need the gift of a second chance, a new start, a new day. God gives us that gift every time we ask, but it's especially symbolic when we're all trying to remember what year to write on the top of our checks.

Last Sunday, I preached a sermon on orienting our new year together as pastor and congregation. I challenged us all in three areas, and I want to reiterate them here. We could look at a new year as exciting and plan so much that we get overwhelmed, or we could look at a new year as too much challenge, and give up before we even start. Instead, I suggest that we pick a few things to focus on this year.

First, I'd like to ask us all to SHARE – to find one new way/place to talk about our faith, and find one new way/place to give our time and talent directly in mission work. We can do this individually or in a group, but it's a combination of faith and work, which is what Jesus did.

Secondly, I hope we'll all find one new way to GROW spiritually this year. I'd love to see a prayer group started here, but there are so many other options too, both individually and in groups. The point is that we cannot grow anything unless we plant something first. If we all participate in a new study or book or prayer time, just think what the Holy Spirit can do with that!

Lastly, I'm challenging us all to DREAM about how we can fulfill God's plan this year, as individuals and as a congregation. God indeed has great plans for us! If we can be open to the guidance of the Holy Spirit, and be discerning people, we can really bear fruit for God's Kingdom in this world. In Biblical tradition, dreams are important communication between God and humans, so let's dream away.

I continue to be so impressed with the gifts and talents in this congregation, and I want to see more! There is so much contained here, and I can't wait to see what this New Year holds as we seek to build up the body of Christ in our midst. We're starting anew, building on last year and unleashing what we have on the world. May we seek God's blessing and SHARE, GROW, and DREAM together!

Blessings,  
Pastor Kimberly

### **Bible Study**

**The Gospel of Mark**  
**Wednesday, 1:00 - 2:30 pm**  
**Beginning January 25<sup>th</sup>**

For the next year, the Gospel of Mark will be our guide through Jesus' life. Are the gospels different in how they tell Jesus' story? How is Mark's gospel unique, and what things can we look for as we hear Mark read on Sunday mornings.

Come join us – for one day or all.



### **STEWARDSHIP AND FINANCE**

*Dave Merow Chair*

**2011 Stewardship** – God has certainly blessed us with generous stewardship giving throughout 2011. We have fully funded the Mission budget and accomplished some ambitious facility projects. A detailed 2011 financial report will be included in the Annual Report to be distributed later in January.

**2012 Stewardship** – There are very positive results from the November/December Stewardship Commitment activity, however we have not achieved the objective established in the approved 2012 budget.

The good news first:

- A total of 40 Estimate of Giving Cards were received (37 in 2011). Eleven of these cards were provided by families who did not estimate for 2011.
- The estimates will provide 77.2% of the giving budget.
- About one quarter of estimates indicated generous increases.
- Loose offerings (givers not using envelopes) and givers who did not estimate will provide additional funds to support the approved budget.

#### **Some concerns:**

- A few families have indicated that circumstances do not allow them to continue giving at the previous level.
- The Stewardship and Finance Committee and the Session will be prioritizing our programs. At this point, I am personally confident we will maintain all of our staffing, we will meet the commitment to distribute 10% of our receipts to Mission activities, and we will continue expanding programs that support our youth and community presence. We will keep you informed of decisions made in this process.

I believe the Estimate of Giving Cards allow us to plan and responsibly adjust the Budget. If we had not received the cards, the need for adjustments would not have been known until much later in the year.

I do appreciate the many families who provided Estimate of Giving Cards.

*I welcome suggestions or comments as we start this process.*

**OFFERING ENVELOPES** – From time to time a member will ask a question about our finances, and the answer deserves to be shared with the entire congregation. In the last few weeks most members have “picked-up” their 2012 offering envelopes, and I was asked about the special envelopes contained in the boxes. There are 59 envelopes in the 2012 boxes. The Thanksgiving Offering is accepted at a Fallston Ecumenical Service and that offering is donated to local food banks. All contributions put in the remaining 58 envelopes are considered “regular giving” and the proceeds pay for FPC budgeted expense items. One advantage of using the envelopes is that contributions in these envelopes will be included on giving statements issued quarterly.

There is a dated envelope for each Sunday in 2012 and four special envelopes that I consider “extra mile giving”. The extra mile giving is encouraged but there is no obligation to participate. The four extra mile giving envelopes are:

- Initial Offering – The church pays \$2.40 for each box of envelopes
- Per Capita – The church is obligated to pay \$32.45 per member in 2012 for administrative costs of Presbytery, Synod, and General Assembly
- Maundy Thursday – This can be used for the offering at the Maundy Thursday service
- Christmas Offering – This can be used for the offering at the Christmas Eve service

Additionally, there are also five special offerings approved by the Session and envelopes are put in the pews to receive these gifts. I will describe these in subsequent Reflector Articles as the offering approaches. These contributions are designated and are generally forwarded to other church agencies.

Pentecost \* One Great Hour of Sharing \* Blanket Sunday \* Peace Making \* Christmas Joy

I welcome your questions, and will attempt to provide a prompt response.

Dave Merow, Chair

### **TREASURER’S REPORT** **PERIOD ENDING 11/30/11**

Year to date November total receipts of \$230,563 are 8.41% higher than 2010 receipts of \$212,684. Disbursements year-to date November 2011 are \$224,897 which is higher than 2010 expenses of \$181,768 by \$32,748 or 23.7%. As compared to 2010, lower personnel costs of (-\$21,387) have been offset by additional major repairs (+\$37,851), the mission donations (+\$3,256) that have been paid earlier than in 2010, Worship (+\$1,288) due primarily to organ maintenance and planned sanctuary technology, and Pastor Search committee and relocation costs of (+6,644).

	<b>NOVEMBER</b>	<b>YEAR-TO-DATE</b>	<b>YEAR-TO-DATE</b>
	<b>ACTUAL</b>	<b>2011</b>	<b>2010</b>
<b>INCOME</b>	<b>\$20,670</b>	<b>\$230,563</b>	<b>\$190,717</b>
<b>EXPENSES</b>	<b>\$28,837</b>	<b>\$224,897</b>	<b>\$181,768</b>



## **Start your New Year Off Right – Join the Choir or Praise Team**

The Praise Team rehearses on Thursday evenings at 7:00 pm and the Choir rehearses at 8:00 pm. Please make your plans, now, and join our Choir / Music Team and enjoy enhancing the spiritual message of our Lord through Music. If you have questions, please see Scott Frutche, Music Director.

### **Enjoy these pictures of Our Church Family**



**The Kitchen and Clean-Up Crew**  
Holly Kravec, Joanne Fleming,  
Amy Hunsinger,  
and Emmy Lou Dorsey



**All Enjoyed the treats**



**Santa has arrived**



**More All around Helpers**  
Scott Sauers and Ann Shockley



**A Shaky Photo of the Photographer**  
Howard Rau  
and a possible assistant Eric Miller



**Melissa Babysitting**



### **FROM THE DEACONS**

*Lou Ann Bane, Chair*

#### **FLOWER CHART**

***The 2012 Flower Chart is available for sign up.*** *If you would like to recognize a family member, friend or secret pal, please choose a date and sign the persons' name. For a donation of just \$15.00 you can take the bouquet home or give to a loved one. When you sign up, just remember to take one of the envelopes complete the front and place in the offering plate along with your check made payable to Fallston Presbyterian Church.*

The next Deacons meeting is January 8<sup>th</sup> immediately following worship.

Thank you.



#### **UPW (United Presbyterian Women)**

Thanks so much to Lou Ann Rau for opening her new home for our Women's Christmas Party. A good time was had by all.

We will continue our study of Max Lucado's book "Traveling Light". We are only on chapter 2, so it is not too late to join the study. Carol Hall will lead our next evening on January 24, 7 pm at Mildred Hopkins house.

If you are looking for a spiritual partner as Kimberly has suggested, this could be a very good place to find one.

Please join us!

*All Women of the Church Are Welcome!*



#### **FPC Seniors**

*Carol Clark, Sr. Leader at 410-557-8038.*

Please watch the "Weekly Reflections" inserted in the Sunday bulletin for further information on the Seniors Luncheon Date.



#### **Stephen Ministry**

Jesus said, "This is my commandment, that you love one another."

Stephen Ministry is a one-to-one ministry by a trained, caring friend.

We have several active Stephen Ministers in our church. They minister to those who are experiencing: loneliness, loss of a spouse, retirement changes, unemployment, discouragement, childbirth, hospitalization, divorce, grief, terminal illness, and questions about God and faith.

If you find yourself in crisis and are in need of someone who cares, someone who supports, someone

who listens or someone who shares, during this difficult time, call the Pastor at 410-879-7729 or Carol Clark at 410-557-8038 to discuss the need of a Stephen Minister.

*Stephen Leaders:* Debbie Glenn, Sandy Stokes, and Carol Clark



**MISSIONS**

*Howard Rau, Chair*

**Mission Focus Donation for January is  
Shampoo  
For Harford Community Action Agency's Pantry**

**Mission Update**

**"Cast your bread upon the water, for after many days you will find it again." Eccl 11:1**

Thank you for all the goodies you put in my car and bring to my garage. Now, to let you know where they are distributed:

**Clothing**

- Suited to Succeed – Women's career type suits, dresses, slacks, purses, scarves, shoes jewelry
- Magnolia Elementary School – children up to size 16 – especially underwear, socks and sweats
- Homeless Shelter – sweaters, sweats, underwear, socks, work boots
- Birthright – infants to 24 months
- Fawn Grove Nazarene Warehouse – out of season

**Cancelled Postage Stamps and Picture Post Cards – Christ Our King Church**

- Soda Can Tabs** – Ronald McDonald House
- Eye glasses, lenses and frames** – Lions Club
- Greeting and Christmas Cards** – Adult Day Care Center
- Campbell Soup Labels** – Magnolia Elementary School
- Books and Magazines** – Baltimore County Jail
- Plastic, Paper and Shopping Bags** – Consignment Shop
- Flower Containers** – Jonathans Florist
- Medical Supplies and Equipment** – Inter Church Medical Assistance
- Yarn** – Project Linus and Prayer Shawls

*Thank you all for your support, Mildred*



**Worship Participation Schedule**

We are so thrilled that you have chosen to sign up and participate in the Worship experience. ***Please Note we are still in need for in all areas.*** Contact the church office, 410-879-7729 to volunteer.

*Thank you.*

January	1	8 Epiphany of the Lord	15 Baptism of the Lord	22	29
<b>(I) Communion</b>	June Clark Fred Stokes				
<b>Usher</b>	Sandy Stokes	Walt Markham	June Clark	Sheri Huppenthal	
<b>Greeter</b>	Deneice Hall	Dale and June Clark	Bob & Karen Walker	Mildred Hopkins	Tom & Sharon Tyler
<b>Lay Reader</b>	Danell Gill	Jan Perry	Steele Glenn	Scott Sauers	Sheri Huppenthal
<b>Children's Message</b>	Pastor	Pat Markham	Lou Ann Rau	Ann Shockley	Sharon Tyler

February	5	12	19 Transfiguration of the Lord	26 1 <sup>st</sup> Sunday in Lent	
(T) Communion	Sheri Huppenthal				
Usher	Tim Markham		Sarah Price		
Greeter	Eric & Laura Miller	Cheri & Matt Boyle	Carol Clark	Bertha Hays	
Lay Reader	Lou Ann Rau	James Padgett			
Children's Message	Ann Shockley				
March	4	11	18	25	
(I) Communion					
Usher					
Greeter	Carol Clark	Bertha Hays	Tim and Jan Markham		
Lay Reader		Mary Ann Harvey		Lou Ann Rau	
Children's Message					



### ASSISTED LISTENING DEVICES

The Sanctuary is now equipped with Assisted Listening Devices. Please see an usher for a hearing set. The only control is an on-off knob much like radios years ago. The knob can be used to adjust the volume during the service for your own comfort level.



## HEALTH for the BODY & SOUL



Debbie Glenn, BSN, RN

January 2012

### NURSE'S NOTES

I am not one to wish time away, but I am so happy to see 2012 come!

Having said that and with the recent memories of health issues during 2011, I also have to acknowledge the blessings that came during the year.

We were able to recruit a new pastor to our church and experience a spiritual rebirth among our congregation; 2012 can bring more blessings to FPC. I was blessed to spend a wonderful vacation in Austria with Steele, Sarah and Britt; 2012 offers more fun. I have financial security and a job that I enjoy; I pray for continued security in 2012. I know the joy of friendships that carried me through rough days; 2012 will maintain these and renew other friendships. I met other cancer patients who helped mold a perspective on the disease that gives the word "survivor" a new meaning; 2012 will be a year for me to somehow give something to other persons with cancer. I relished in Steele's unrelenting love and the support of my family; 2012 will be a continuation of family strength.

Most importantly, my relationship with God became stronger as I struggled on some days and rejoiced on others; I knew that the worst of days and the best of days were all God's doing and there was a purpose for my life. I am still trying to figure out what the greater purpose is, so I try to spend more time listening for God to speak *to* me rather than me talking *at* him.

So, we will see what 2012 brings for me, my family and for this community we call Fallston Presbyterian church.

### **January is Thyroid Awareness Month**

Your thyroid is a butterfly-shaped gland in your neck that sits just above the collarbone. It is an endocrine gland that makes hormones. It helps regulate metabolism.

Millions of people in the U.S. have thyroid disease that either increases or decreases metabolism. A thyroid gland that is not active enough, called hypothyroidism is more common. It can make you gain weight, feel fatigued and have intolerance to cold.

If the thyroid is too active, called hyperthyroid, the thyroid is producing more hormone than the body can use. It can result in weight loss, a fast heart rate and sensitivity to heat. If your thyroid is too active, it makes more thyroid hormones than body needs. That condition is hyperthyroidism. Too much thyroid hormone can make you lose weight, speed up your heart rate and make you very sensitive to heat. There are many causes for both conditions. Medication is effective in trying to reset the body's metabolism to a normal rate. In the case of hyperthyroidism, sometimes surgery is required to remove part of the gland. The thyroid gland is also susceptible to developing nodules which are most often benign. Cancer can attack the thyroid, but fortunately in most cases, is curable with early treatment. *Source: Medlineplus.gov*

### **Low Back Pain**

Back pain is one of the most common medical problems, affecting 8 out of 10 people at some time during their lives. It can range from a dull ache to a sudden, sharp pain.

As we age and develop some arthritis in the spine, back pain becomes more common.

Acute back pain comes on suddenly and usually lasts from a few days to a few weeks.

Back pain that lasts more than three months is called chronic.

Most often, back pain will go away on its own, though it may take a while. Taking an over the counter pain reliever will help. However, staying in bed for more than 1 or 2 days can make it worse.

If your back pain is severe or doesn't improve after three days, call your health care provider. Likewise, get medical attention if you have back pain after an injury,

*Source: National Institute for Arthritis and Musculoskeletal and Skin Disease*

### ***Cranberries and Urinary Health***

For persons prone to urinary tract infections and cystitis, the cranberry can be a potent protective fruit. Cranberries are highly acidic and increase the acidity of the urine. This creates a hostile environment for bacteria and viruses and makes it difficult for them to grow. Cranberries also contain a chemical that captures and encases bacteria, making it difficult for the bacteria to burrow into the lining of the bladder. There is evidence that as little as  $\frac{1}{2}$  cup of cranberry juice per day can prevent urinary tract infections. However, cranberry juice is not a substitute for antibiotics if you do develop and infection.

### ***Our God is a Merciful God***

Every time God heals someone, he is showing incredible mercy, love, goodness and compassion towards that person. We need to grasp from Scripture just how merciful, kind and compassionate God really is. During times of sickness our faith must be strong enough to *really* believe in his mercy and divine healing powers. Arm yourself with "go to verses" that you can go to for your own purpose or to help others going through illness.

*"But You, O Lord, are a God full of compassion, and gracious, longsuffering and abundant in mercy and truth." (Psalm 86:15)*

*"The Lord is good; His mercy is everlasting..." (Psalm 100:5)*

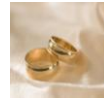
A simple prayer, saying, "God, have mercy on me (or \_\_\_) and heal me (or \_\_\_). Amen is as effective as a long, rambling plea; God hears our prayer no matter how long or short it may be.

## *Celebrate January Birthdays and Anniversaries with the following:*

*(If someone is missing, please let the church office know)*



**Happy Birthday**



**Joyeux Anniversaire**

1<sup>st</sup> Sarah Price  
5<sup>th</sup> Wendy Galliher  
6<sup>th</sup> Dylan Tyler  
15<sup>th</sup> Mary Kuntz  
17<sup>th</sup> Wes Huppenthal  
21<sup>st</sup> Ron Clark  
21<sup>st</sup> Diane Hudson  
25<sup>th</sup> Tom Tyler  
26<sup>th</sup> Brian Bohannon

3<sup>rd</sup> Tom and Ann Shockley  
11<sup>th</sup> Geary and Emmy Lou Dorsey  
17<sup>th</sup> Dorothy and John Brazil



### **PRAYER CONCERNS**

*(To place someone on the Prayer List, please let the office know via e-mail or phone call. Please Note: Friends and Family Prayer Requests will remain on the Prayer List for 3-weeks unless requested to remain on by phone call, e-mail or in writing by placing a message in the Offering Plate or the Church Secretary's mail box. Members will be removed as deemed appropriate. Thank you.)*

### **MEMBERS**

**Jackie Stewart**, Home, 2701 Rocks Road, Forest Hill, MD 21050-1503

**Lois Iley** - P.O. Box 25, Fallston, MD 21047-6025

**Michael and Patti Sauers** - 1234 Conowingo Road, Bel Air, MD 21014-1853. Michael, new infection.

**George Wenzel** - Hart Heritage, 3708 Grier Nursery Road, Room 18, Street, MD 21154.

**Ann Huber** - Myositis

**Mary Kuntz** – would love cards and visits – address is: 259 Wheeler School Road, Pylesville, MD 21132

**Virginia Schulte** - Address: Mrs. Virginia Schulte, C/O Karen Bailey, 15323 Russell Road, Delmar, DE 19940.

**Debbie and Steele Glenn** – Congratulations to Debbie, she is cancer free

**Diane Hudson** –Home: 2309 Reckord Road, Joppa, MD 21085

**Warren Voss** - Jeannie Voss' husband, Cancer, Chemo. Pray that one of his family members can be an eligible donor.

**Carol Hall** – Mastectomy

**Tom & Linda Hopkins** – moved. New address: 233 St David's Ave, Myrtle Beach SC 29588, 843-215-6069

**Teri Mairose** - Ankle repair 12/9, recuperating at home

### **FRIENDS AND RELATIVES**

\*A. J. Pumilla – husband of Laura Blethen's friend Jess, complications and infections from Brain Tumor surgery

\*\*\***Kevin**, Jack Prugh's boss, had the flu that turned into pneumonia

\*\*\***Bill**, friend of Jack Prugh, diagnosed with cancer of the esophagus

\*\*\***Stephen**, Carol Clark's Son in a Texas, upcoming tests and possible surgery Jan. 17<sup>th</sup>

\*\*\***Doreen DiVenanzio** - Sharon Tyler's sister, Chemo complete reconstructive surgery 12/2/11, 529 32nd Street, West Palm Beach, FLA 33407

\*\*\***Joe McCann** – Sandy Stokes Father, chemo

\*\*\***Bob**, friend of Jack Prugh, cancer returned after 4-1/2 years. He is back on chemo.

\*\*\***Marlene Glenn**, Steele's Mom, Bronchitis in Rock Spring 1 Colgate Dr, Forest Hill, MD 21050

\*\*\***Frances Vinciguerra**, Bertha Hays Sister, address: 35 Bellmawr Drive, Rochester, New York 14624-4646

\*\*\***Dennis Freund**, Carol Clark's Brother, Cancer,

- \*\*\***Shari**, cousin of Dale Clark, 2 months of chemo for Colon Cancer. Will have colon reconnection surgery tentative end of February.
- \*\*\***Bryan** - friend of Jack Prugh's son, diagnosed with MS
- \*\*\***Jerry and Family** - friend of Jack Prugh, Wife has Alzheimer's disease
- \*\*\***Dan and Claire** - friends of Jack Prugh, Claire diagnosed with Stage 4 Cancer
- \*\*\***Mike Scherm** - friend of Jack Prugh, battling kidney cancer
- \*\*\***Arlene and Willie** - Jack Prugh's friends, facing long term health issues.
- \*\*\***Mildred Prugh** - , Jack Prugh's mother, in nursing home
- \*\*\***Barry Bradfield** - Sheri Huppenthal's brother, starting Radiation treatment for Prostate Cancer on 12/5.
- \*\*\***Elise Soroka** - Niece of Erma Moomaw, Prayers for her to overcome an addiction
- \*\*\***Dr. B** – friend of Lou Ann Rau, Breast Cancer

**IN SERVICE**

**National Guard Aviation Unit from Edgewood in Iraq**

**Chad Bacastow**

**Ben Cooper**, Camp LeJeune

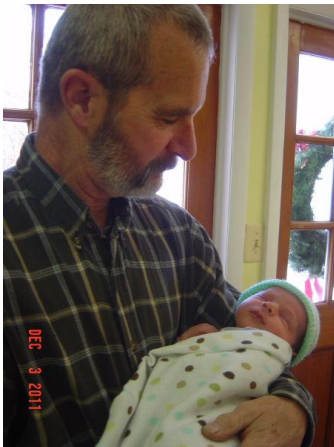
**TJ Geoghagan**, Pre-K Mom's husband, not sure where he is, possibly Libya - Marine Corp.

**CONGRATULATIONS**

Bryan, Sharon Tyler's Nephew who has been selected to receive the Baltimore County Martin Luther King Content of Character Award.



**New Babies in our Midst**



**Geary Dorsey and Logan Dorsey  
Born in November  
To Aaron and Lauren Dorsey**



**Pastor Kimberly with Carolina Galliher  
Born in December  
To Chrissie and Travis Galliher**



Dear Church Family,

What an amazing surprise to receive such a generous gift from all of you on Christmas Eve! Megan, Melissa, and I are delighted to be part of such a loving church family. I thank you for supporting me in caring for my family as well as our collective family. I am humbled by your gift, and am looking forward to a whole new year together.

*In thanksgiving, Pastor Kimberly*



# Fallston Presbyterian Church

FALLSTON PRESBYTERIAN CHURCH  
 PO BOX 54  
 FALLSTON, MD 21047

EMAIL: [fallstonpc@gmail.com](mailto:fallstonpc@gmail.com)  
 Web Site: <http://www.fallstonpc.com>  
 PHONE: 410-879-7729 FAX: 410 803 0138

Sunday	Monday	Tuesday	Wednesday	Thursday	Friday	Saturday
<b>1</b> 10:30 am – Worship	<b>2</b> 7:30 pm Worship Cmte.	<b>3</b> 10:00 am Staff Mtg. 12:00 – 2:00 pm Pre-K Teacher Training 7:00 pm Facilities & Grounds	<b>4</b> 8:30 am - FH is a Classroom 8:30 am – Downstairs is Clsrm 8:30 am – Upstairs is Clsrm. 8:00 pm- FH – Al-Anon	<b>5</b> 8:30 am - FH is a Classroom 8:30 am – Downstairs is Clsrm 8:30 am – Upstairs is Clsrm. 7:00 pm – Praise Team Prac. 8:00 pm – Choir Practice	<b>6</b> 8:30 am – Downstairs is a Classroom 8:30 am – Upstairs is Clsrm.	<b>7</b>
<b>8</b> 9:00 am – Sunday School 10:30 am – Worship 11:30 – Deacons Meeting	<b>9</b> 8:30 am – Downstairs is Clsrm 8:30 am – Upstairs is Clsrm. 7:00 pm – Finance	<b>10</b> 8:30 am – FH is Clsrm. 8:30 am – Downstairs is Clsrm 8:30 am – Upstairs is Clsrm. 10:00 am – Staff Meeting 7:00 pm - Session Meeting	<b>11</b> 8:30 am – Conf. Rm.- Pre-K 8:30 am – Downstairs is Clsrm 8:30 am – FH is Clsrm. 8:30 am – Upstairs is Clsrm. 8:00 pm – Al-Anon	<b>12</b> 8:30 am – FH is Clsrm. 8:30 am – Downstairs is Clsrm 8:30 am – Upstairs is Clsrm. 7:00 pm - Praise Team 8:00 pm - Choir	<b>13</b> 8:30 am – Downstairs is Clsrm 8:30 am – Upstairs is Clsrm.	<b>14</b>
<b>15</b> 9:00 am – Sunday School 10:30 am – Worship	<b>16</b> 8:30 am – Downstairs is Clsrm 8:30 am – Upstairs is Clsrm.	<b>17</b> 8:30 am – FH is Clsrm. 8:30 am – Downstairs is Clsrm 8:30 am – Upstairs is Clsrm. 10:00 am – Staff Meeting 7:00 pm - Evangelism	<b>18</b> 8:30 am – Conf. Rm.- Pre-K 8:30 am – Downstairs is Clsrm 8:30 am – FH is Clsrm. 8:30 am – Upstairs is Clsrm. 8:00 pm – Al-Anon	<b>19</b> 8:30 am – FH is Clsrm. 8:30 am – Downstairs is Clsrm 8:30 am – Upstairs is Clsrm. 7:00 pm - Praise Team 8:00 pm - Choir	<b>20</b> 8:30am – Pre-K Downstairs is Clsrm 8:30 am – Pre-K Upstairs is Clsrm.	<b>21</b>
<b>22</b> 9:00 am – Sunday School 10:30 am – Worship	<b>23</b> 8:30 am – Downstairs is Clsrm 8:30 am – Upstairs is Clsrm. 7:00 pm – Stephen Ministry	<b>24</b> 8:30 am – FH is Clsrm. 8:30 am – Downstairs is Clsrm 8:30 am – Upstairs is Clsrm. 10:00 am – Staff Meeting	<b>25</b> 8:30 am – Conf. Rm.- Pre-K 8:30 am – Downstairs is Clsrm 8:30 am – FH is Clsrm. 8:30 am – Upstairs is Clsrm. 1:00 pm – Bible Study 8:00 pm – Al-Anon	<b>26</b> 8:30 am – FH is Clsrm. 8:30 am – Downstairs is Clsrm 8:30 am – Upstairs is Clsrm. 7:00 pm - Praise Team 8:00 pm - Choir	<b>27</b> 8:30 am – Pre-K Downstairs is Clsrm 8:30 am – Pre-K Upstairs is Clsrm.	<b>28</b> Lights in Sanctuary to be Changed
<b>29</b> 9:00 am – Sunday School 10:30 am – Worship	<b>30</b> 8:30 am – Downstairs is Clsrm 8:30 am – Upstairs is Clsrm. 9:00 – 3:00 – Pre-K Conferences – Conf. Rm	<b>31</b> 8:30 am – FH is Clsrm. 8:30 am – Downstairs is Clsrm 8:30 am – Upstairs is Clsrm. 9:00 – 3:00 – Pre-K Conf. – Conf. Rm 10:00 am – Staff Meeting				